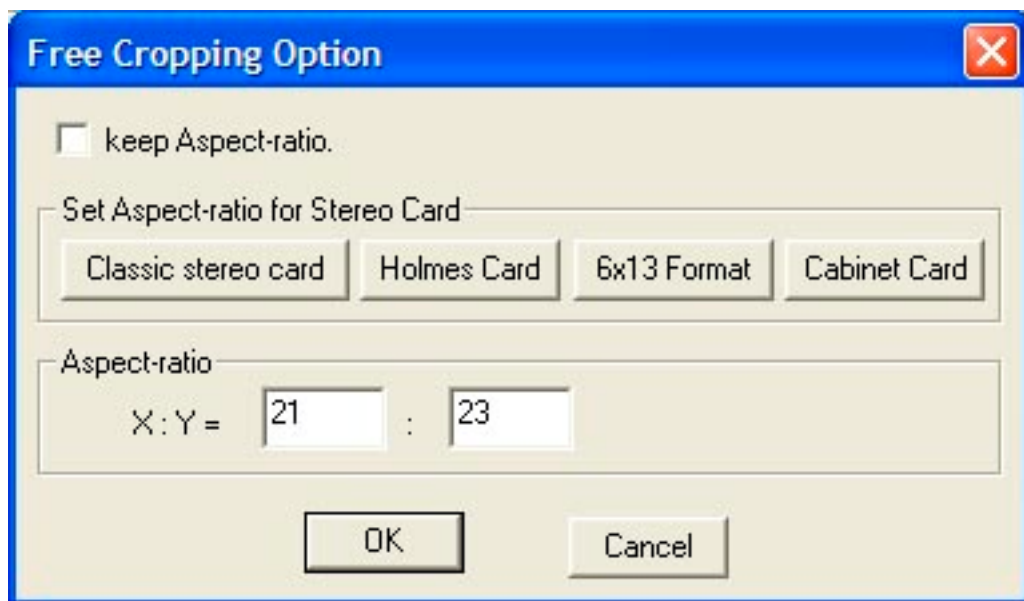


CHICAGO STEREO CAMERA CLUB Cropping and Resizing

Cropping anaglyphs is a basic crop. Cropping for cards is a more critical produce and depends on the finished size of the cards.

Anaglyphs

Use the FREE CROPPING tool or Edit-Crop-Free Cropping Option and make sure there is no check mark by “keep aspect ratio” to crop a picture to improve composition and eliminate unwanted areas from the picture. Click OK. (Do not click to choose any of the card sizes). In either left or right view (if viewing side-by-side) or in the anaglyph view, put the cursor at the location of the upper left corner and left-click and drag to the lower right corner. Move the cursor into the cropping rectangle, left-click and drag to position the cropping rectangle, and release the mouse button to set the crop.



Cards

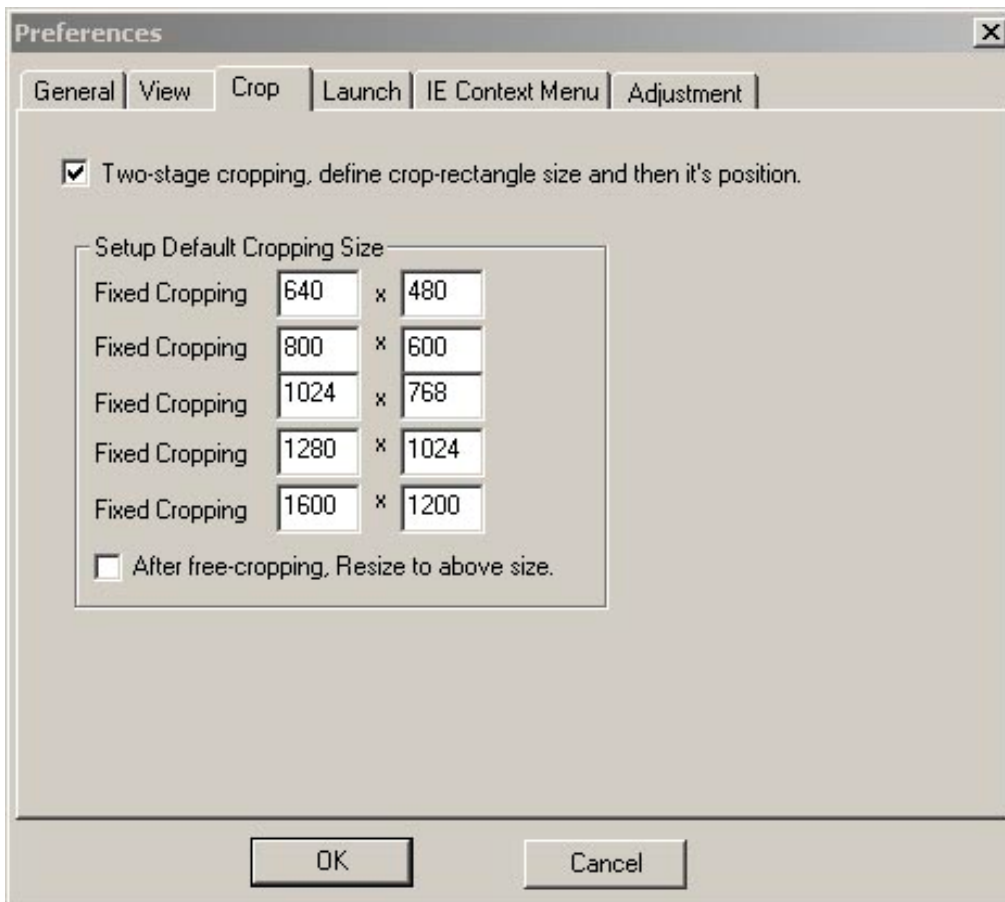
Use the FREE CROPPING tool or Edit-Crop-Free Cropping Option and make sure there IS a check mark by “keep aspect ratio” to crop a picture. Click to choose one of the pre-set card sizes. Click OK. The pre-set card size will be remembered by SPM when choosing to print the card. In either left or right view, put the cursor at the location of the upper left corner and left-click and drag to the lower right corner. Move the cursor into either rectangle, left-click and drag to position the cropping rectangle, and release the mouse button to set the crop.

It may be desirable to crop in two steps, first doing a free crop without the “keep aspect ratio” box being checked to eliminate unwanted areas near the edges of the picture and then do an aspect ratio crop for final sizing.

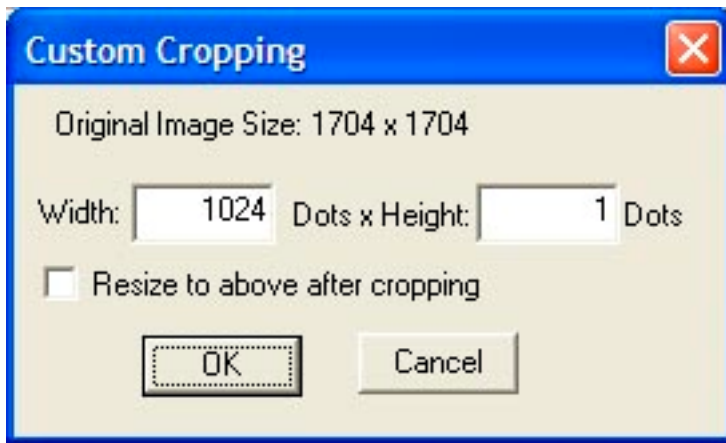
Cropping and sizing with pixels

For some electronic exhibitions and when fixed pixel sizing is needed, there are some pre-set cropping sizes available, as well as a custom cropping option where the user defines the pixel size.

Edit-Preferences-Crop will allow you to either accept or change the default pixel sizes.



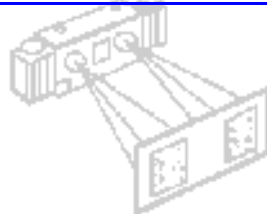
Choosing the FREE CROPPING tool or Edit-Crop will allow you to choose one of the 5 pre-set pixel sizes, or to choose the Custom Crop option, which will bring up a dialogue box asking for the exact pixel size.



'Resize to above after cropping'
Check this to enable resizing to the selected size after doing a free crop.

For more information

<http://stereo.jpn.org/eng/stphmkr/index.html>



CHICAGO STEREO CAMERA CLUB